

# Human TM4SF1 Protein-Nanodisc

Cat. No. TSF-HM00N

## Description

**Source** Recombinant Human TM4SF1 Protein-Nanodisc is expressed from HEK293 with His tag at the N-terminus (FITC-equivalent protein is fused on cytoplasmic part).

It contains Met1-Cys202.

**Accession** P30408

**Molecular Weight** The protein has a predicted MW of 51.80 kDa.

**Endotoxin** Less than 1EU per  $\mu\text{g}$  by the LAL method.

## Formulation and Storage

**Formulation** Supplied as 0.22  $\mu\text{m}$  filtered solution in PBS (pH 7.4). Notice: Not recommended for immunization and flow cytometry in mammalian cells.

**Storage** Valid for 12 months from date of receipt when stored at  $-80^{\circ}\text{C}$ . Recommend to aliquot the protein into smaller quantities for optimal storage. Please minimize freeze-thaw cycles.

## Background

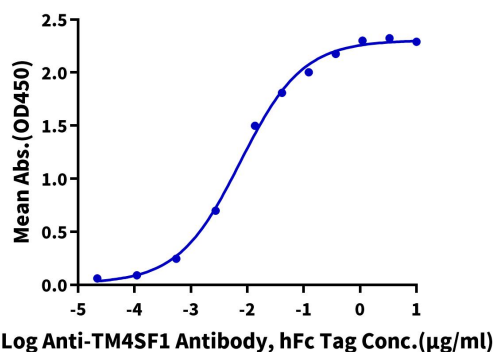
Transmembrane-4-L-six-family-1(TM4SF1), a four-transmembrane L6 family member, is highly expressed in various pancreatic cancer cell lines and promotes cancer cells metastasis. It is upregulated in several epithelial cancers and is closely associated with poor prognosis.

## Assay Data

### ELISA Data

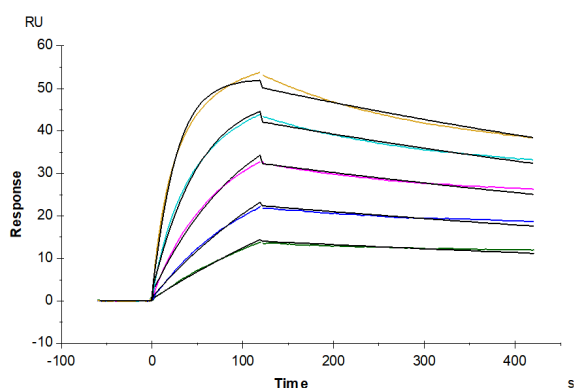
#### Human TM4SF1 Nanodisc, His Tag ELISA

0.1 $\mu\text{g}$  Human TM4SF1 Nanodisc, His Tag Per Well



Immobilized Human TM4SF1 Nanodisc, His Tag at  $1\mu\text{g}/\text{ml}$  ( $100\mu\text{l}/\text{well}$ ) on the plate. Dose response curve for Anti-TM4SF1 Antibody, hFc Tag with the EC50 of  $7.5\text{ng}/\text{ml}$  determined by ELISA (QC Test).

### SPR Data



Human TM4SF1 Nanodisc, His Tag captured on CM5 Chip via Anti-his antibody can bind Anti-TM4SF1 Antibody with an affinity constant of  $0.54\text{ nM}$  as determined in SPR assay (Biacore T200).